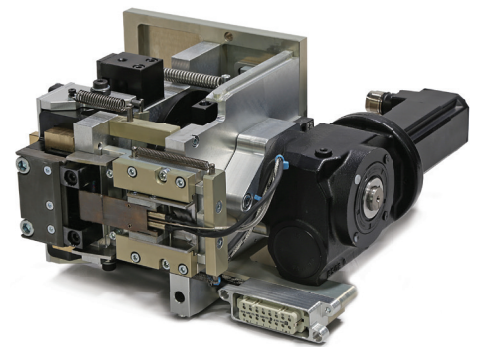
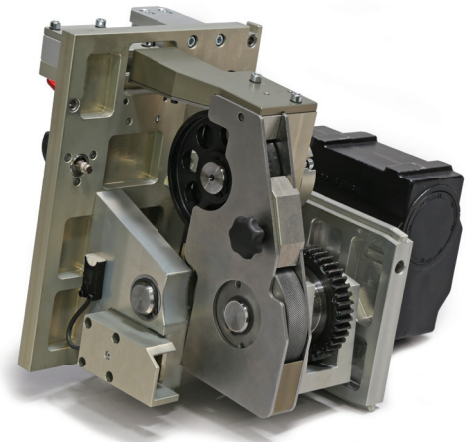
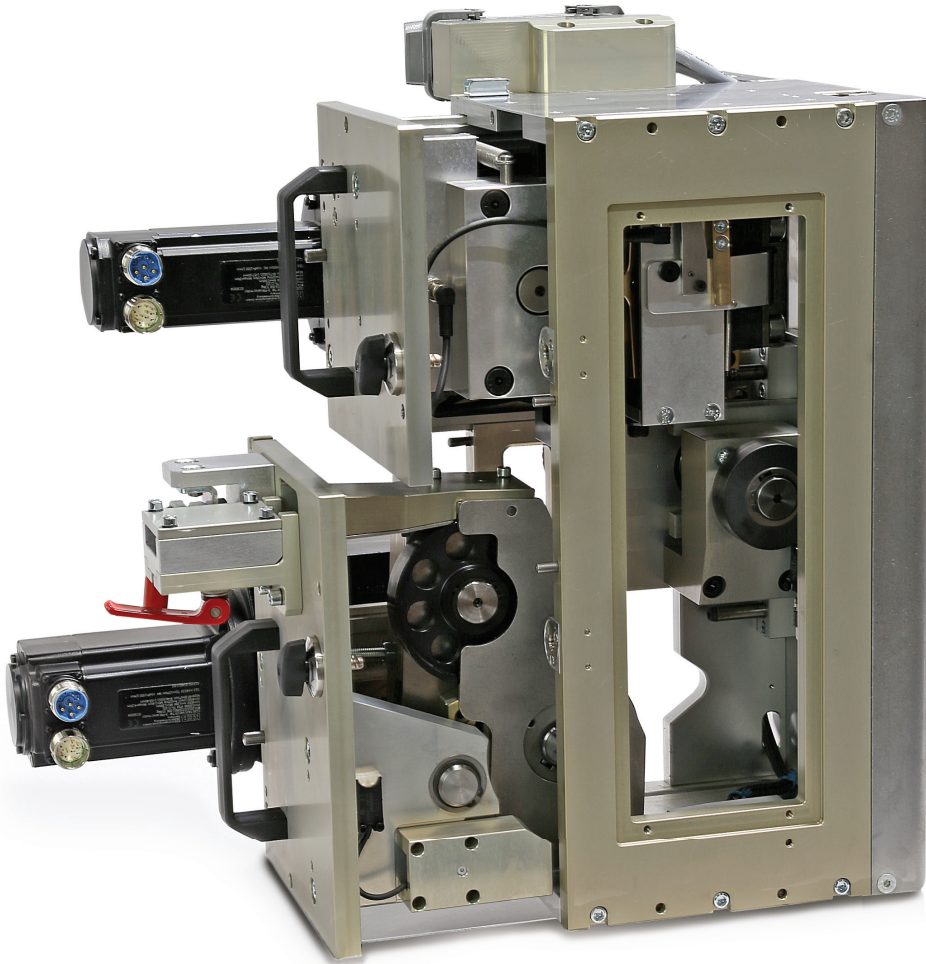


SSE SERIES

High Tension Strapping Head



SSE-900

FEATURES

SPEED. Industry Leading Speed of up to 49 ft/set.
Rugged Design.

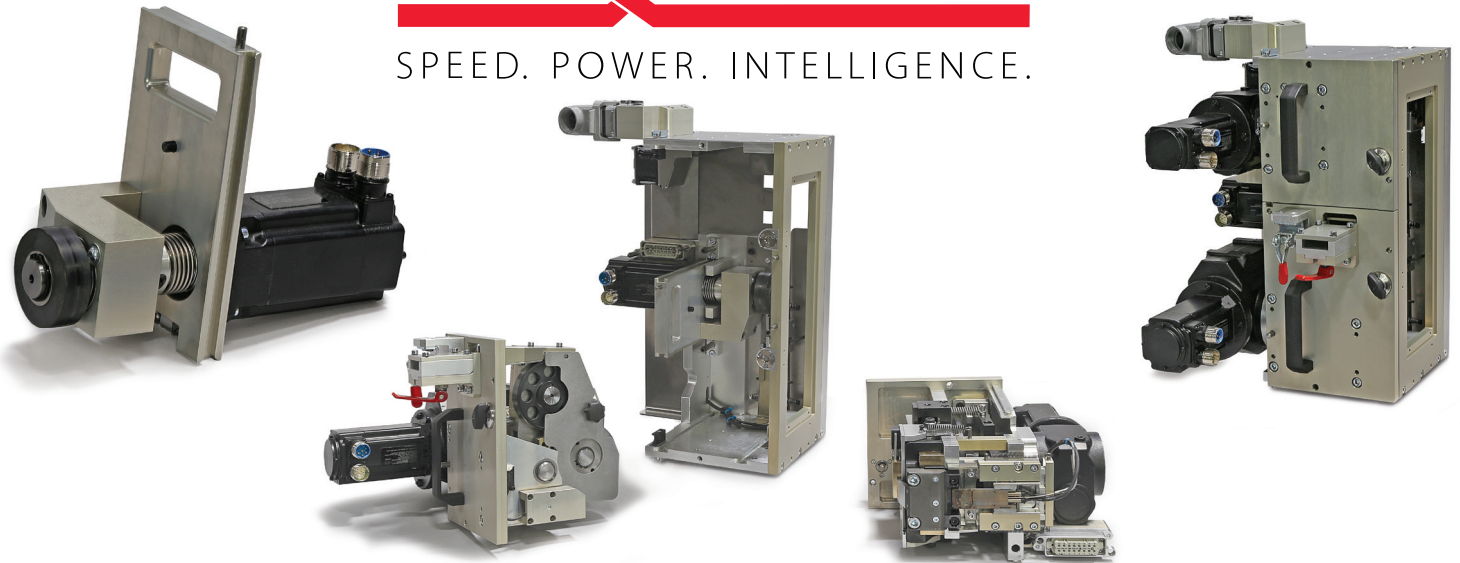
POWER. Quick-change Cartridges.
Four Piece Modular Design.

INTELLIGENCE. Servo Actuated.
Smart lot Integration.
Small Footprint

The 900 Strapping head meets your need for a highly reliable, advanced, low cost of ownership production device. Providing unmatched speed, tension, flexibility and on-board technology the SSE is the peak of strapping head design. Contact your local Samuel sales representative to discuss the needs of your operation.

SSE SERIES

SPEED. POWER. INTELLIGENCE.



FEATURES

Quick-change Cartridge Design:

Three quick-change cartridges provide Feed/Reverse, Tension and Sealing operations in discrete packages. Replacing cartridges takes as little as 30 seconds, and the heaviest cartridge is 42 lb.

Servo Actuated:

The head functions via three direct-drive servo motors – one for each cartridge. Servo's eliminate clutches and brakes, and timing adjustments frequently associated with strapping heads. Servo technology allows advanced IoT communications to highlight potential performance issues and allow predictive maintenance.

Fewer Parts:

Using technology to reduce complexity the SSE has 30% fewer parts than other heads in the market-place. Fewer parts means more reliability and lower cost of ownership.

	900
Maximum Tension	550 lb.
Weight	42 lb., 12 lb., 40 lb.
Strap width	3/8" and 5/8"
Strap Thickness	0.019 to 0.043"
Feed Speed	up to 49 fps

Extremely High-speed:

With feed-speeds up to 49 FPS the SSE offers unparalleled strapping speed.

Rugged Design:

The cartridges are designed with industrial application in mind. Motors are industrial grade, components are heavy-duty machined metal. Samuel Toughness remains the design theme.

Intelligent IoT Design:

When installed in a Samuel machine the SSE cartridges communicate to the PLC – identifying themselves to provide an operation and maintenance record for each module – simplifying troubleshooting and long-term maintenance planning. Servo controllers can communicate valuable performance data to identify wear before it creates downtime.

Reduced Operating Costs:

Quick-change cartridges that tell the maintenance team about important operating parameters allow predictive maintenance – reducing downtime. All-metal construction eliminates high-cost downtime when polymer components fail prematurely. Fewer parts mean less inventory, higher reliability and simpler repair tasks.

© SSE 900-135044-09/21
Specifications are for guidance purposes only and subject to change without notice.

packaging@samuel.com
www.samuelpsg.com

YOUR SUCCESS IS OUR BUSINESS

U.S.A: 800-323-4424
Canada: 800-607-8727

SAMUEL
1855
PACKAGING SYSTEMS GROUP