

# MODEL 415G-1

Strapping Machine



*Also available as a  
Stainless Steel Side Seal*

## STANDARD FEATURES

AVAILABLE IN TABLE TOP, POWERED BELT CONVEYOR TOP & SIDE SEAL CONFIGURATIONS.

- **SELF-THREADING:** Proven auto-feed allows strap to automatically feed with the touch of a lever from outside machine.
- **RETRACT & REFEED STRAP MANUALLY:** Eliminates strap waste by retracting and refeeding excess strap.
- **EFFICIENT DESIGN:** Fewer moving parts & fewer adjustments means simplified operation and maintenance.
- **ENERGY SAVING OPERATION:** Motors run only during strap cycle, providing the quietest working environment possible.
- **SEALING HEAD STRAP EJECTOR:** Eliminates down time by clearing unwanted strap from seal head.
- **CHOICE OF STRAP:** Polypropylene strap sizes can be easily changed in the field, with minimum parts required. Available strap widths: 6, 9, 12 and 15mm.

YOUR SUCCESS IS OUR BUSINESS

  
**SAMUEL**  
PACKAGING SYSTEMS GROUP

# MODEL 415G-1

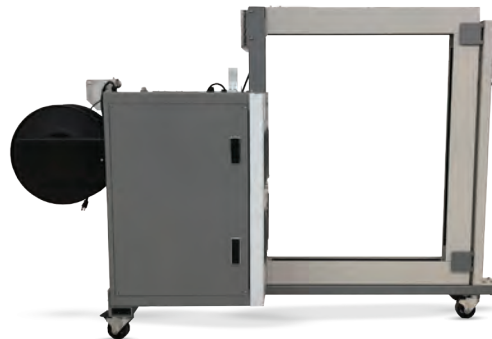
## Strapping Machine

Through innovative engineering, Samuel Packaging Systems Group can custom design the exact strapping machine you need for your specific requirements.

- Optional control package for custom applications
- Centre seal available on standard or fully automatic
- Side and / or top compactor
- Narrow space belt conveyors



**STAINLESS**



**SIDE SEAL**



**POWER CONVEYOR**

### MODEL 415 STANDARD SPECIFICATIONS

<b>Package Size</b>	W 600 x H 460 mm	W 24" x H 18"
<b>Tension Range</b>	Control allows full range of tension adjustment for any package	
<b>Power</b>	115 V 60 HZ, Single phase (220 V, 3 phase available on request)	
<b>Machine Size</b>	W 520 x H 1360 x L 1361 mm	W 20.4" x H 53.5" x L 49.5"
<b>Table Height</b>	785 mm	31"
<b>Weight</b>	206 kg	455 lbs
<b>Strap Sizes Available</b>	6, 9, 12, 15 mm	1/4", 3/8", 1/2", 5/8"

### MODEL 415G-1 IMPROVEMENTS

<b>Cycle Rate</b>	Increased 40% to 50 straps per minute
<b>Motor</b>	110 V AC motors replaced with brushless DC
<b>Wiring</b>	110 V AC control wiring to low voltage 24 V DC
<b>Ergonomics</b>	Operator friendly waist high loading
<b>Brake</b>	Electric clutch coil brake
<b>Feeding</b>	Electric auto feed / Auto eject
<b>Parts</b>	80% Same parts as the 415
<b>Conveyors</b>	New conveyor design for automatics

© 130988 - 415G-1 - August 2019  
Specifications are for guidance purposes only and subject to change without notice.

packaging@samuel.com  
www.samuelpsg.com

Canada: 800-607-8727  
U.S.A: 800-323-4424

  
**SAMUEL**  
PACKAGING SYSTEMS GROUP